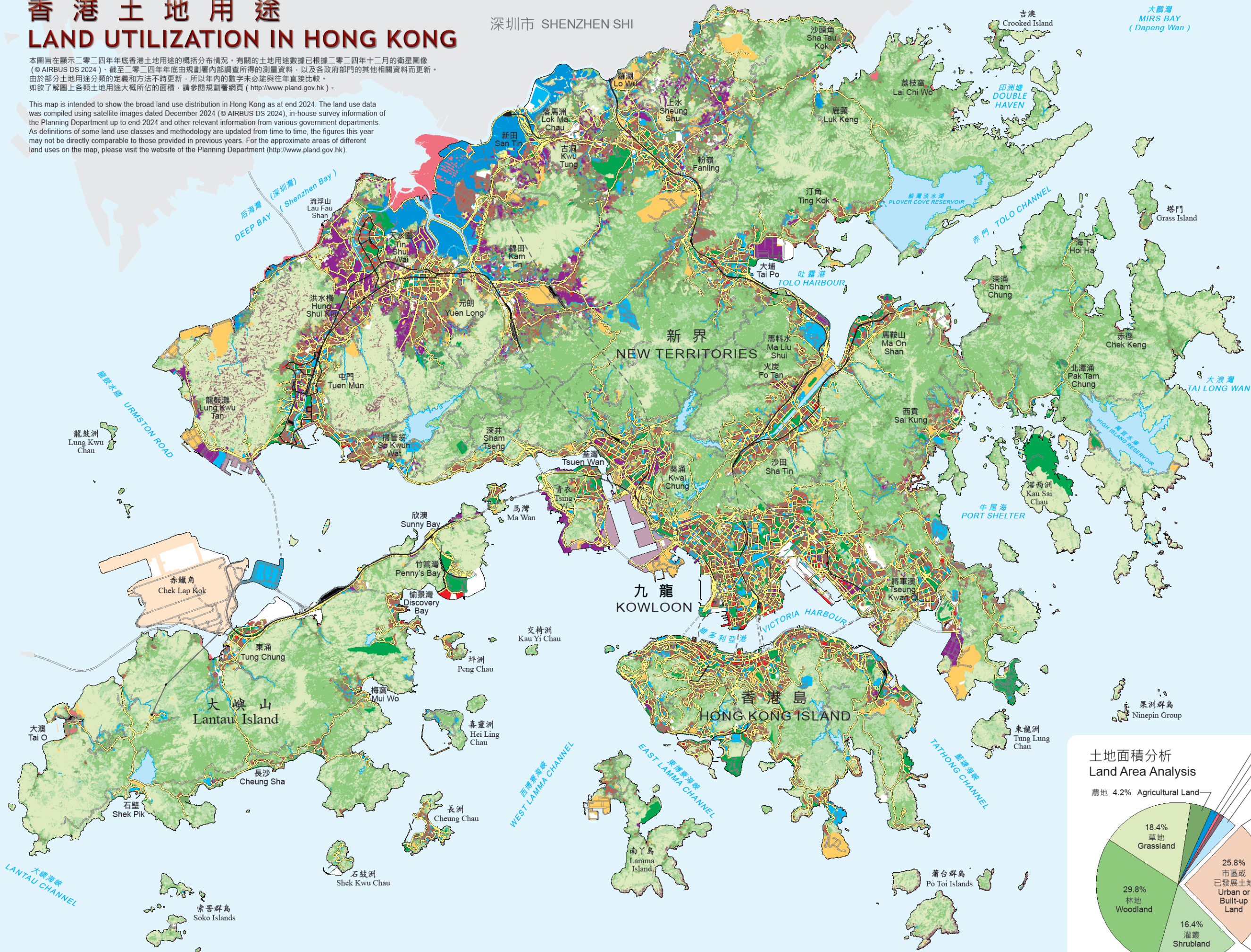


# 香港土地用途 LAND UTILIZATION IN HONG KONG

本圖旨在顯示二零二四年年底香港土地用途的概括分布情況。有關的土地用途數據已根據二零二四年十二月的衛星圖像 (© AIRBUS DS 2024)，截至二零二四年年底由規劃署內部調查所得的測量資料，以及各政府部門的其他相關資料而更新。由於部分土地用途分類的定義和方法不時更新，所以年內的數字未必能與往年直接比較。如欲了解圖上各類土地用途大概所佔的面積，請參閱規劃署網頁 (<http://www.pland.gov.hk>)。

This map is intended to show the broad land use distribution in Hong Kong as at end 2024. The land use data was compiled using satellite images dated December 2024 (© AIRBUS DS 2024), in-house survey information of the Planning Department up to end-2024 and other relevant information from various government departments. As definitions of some land use classes and methodology are updated from time to time, the figures this year may not be directly comparable to those provided in previous years. For the approximate areas of different land uses on the map, please visit the website of the Planning Department (<http://www.pland.gov.hk>).

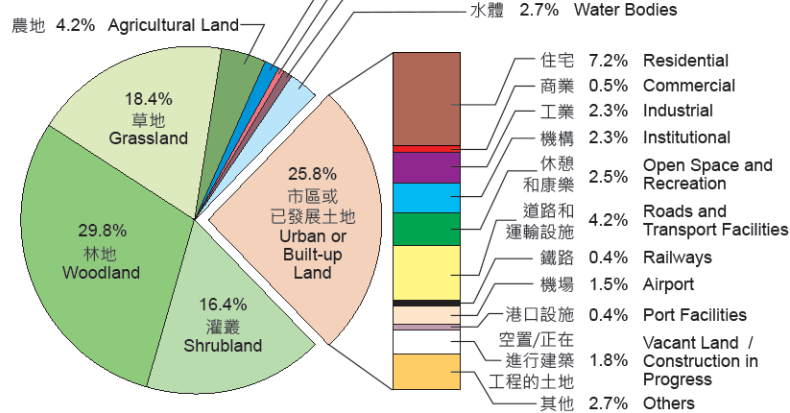
深圳市 SHENZHEN SHI



## 土地用途類別 Land Use Categories

住宅	Residential
商業	Commercial
工業	Industrial
機構	Institutional
休憩和康樂	Open Space and Recreation
道路和運輸設施	Roads and Transport Facilities
鐵路	Railways
機場	Airport
港口設施	Port Facilities
空置/正在進行建築工程的土地	Vacant Land / Construction in Progress
其他	Others
農地	Agricultural Land
魚塘/基圍	Fish Ponds / Gei Wais
林地	Woodland
灌叢	Shrubland
草地	Grassland
紅樹林和沼澤	Mangrove and Swamp
劣地/岩岸	Badland / Rocky Shore
水體	Water Bodies

## 土地面積分析 Land Area Analysis



土地總面積為1 119 平方公里 (包括高水位線下約4 平方公里的紅樹林和沼澤)  
Total land area = 1 119 km<sup>2</sup> (including about 4 km<sup>2</sup> of Mangrove and Swamp below the High Water Mark)

組別 LUM/HK/A3/2024 Series

香港特別行政區政府規劃署 2025 年出版  
© 2025 版權所有 未經許可 不得複製 政府物流服務署印  
Published by the Planning Department, the Government of the Hong Kong Special Administrative Region in 2025  
© 2025 Copyright reserved - reproduction by permission only Printed by the Government Logistics Department

比例尺 1 : 170 000 Scale  
公里 2 0 2 4 6 8 10 km

規劃署  
Planning Department