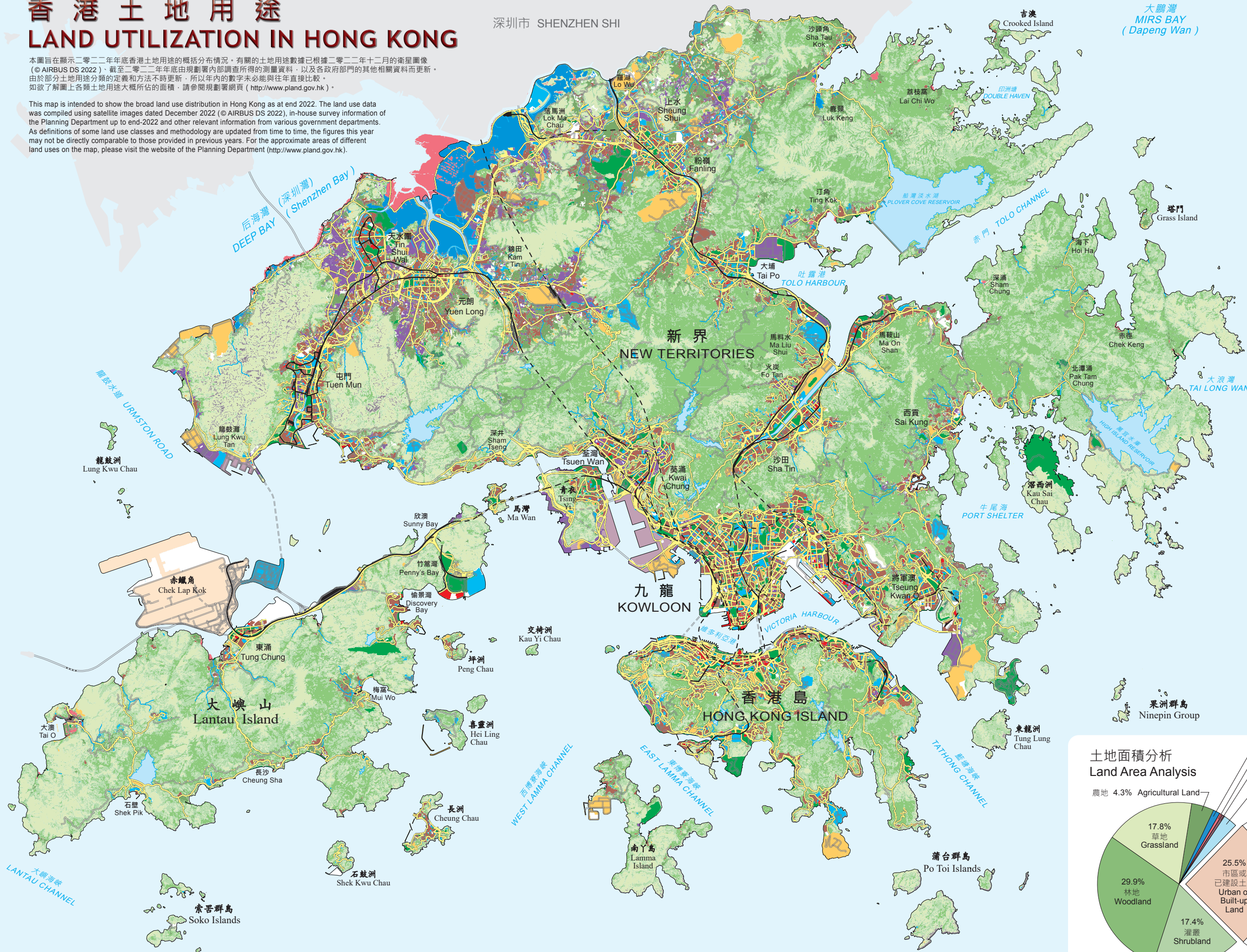


香港土地用途

LAND UTILIZATION IN HONG KONG

本圖旨在顯示二〇二二年年底香港土地用途的概括分布情況。有關的土地用途數據已根據二〇二二年年十二月的衛星圖像 (© AIRBUS DS 2022) 、截至二〇二二年年底由規劃署內部調查所得的測量資料，以及各政府部門的其他相關資料而更新。由於部分土地用途分類的定義和方法不時更新，所以年內的數字未必能與往年直接比較。如欲了解圖上各類土地用途大概所佔的面積，請參閱規劃署網頁 (<http://www.pland.gov.hk>) 。

This map is intended to show the broad land use distribution in Hong Kong as at end 2022. The land use data was compiled using satellite images dated December 2022 (© AIRBUS DS 2022), in-house survey information of the Planning Department up to end-2022 and other relevant information from various government departments. As definitions of some land use classes and methodology are updated from time to time, the figures this year may not be directly comparable to those provided in previous years. For the approximate areas of different land uses on the map, please visit the website of the Planning Department (<http://www.pland.gov.hk>).



土地用途類別 Land Use Categories		
住宅	<div></div>	Residential
商業	<div></div>	Commercial
工業	<div></div>	Industrial
機構	<div></div>	Institutional
休憩和康樂	<div></div>	Open Space and Recreation
道路和運輸設施	<div></div>	Roads and Transport Facilities
鐵路	<div></div>	Railways
機場	<div></div>	Airport
港口設施	<div></div>	Port Facilities
空置/正在進行建築工程的土地	<div></div>	Vacant Land / Construction in Progress
其他	<div></div>	Others
農地	<div></div>	Agricultural Land
魚塘/基圍	<div></div>	Fish Ponds / Gei Wais
林地	<div></div>	Woodland
灌叢	<div></div>	Shrubland
草地	<div></div>	Grassland
紅樹林和沼澤	<div></div>	Mangrove and Swamp
劣地/岩岸	<div></div>	Badland / Rocky Shore
水體	<div></div>	Water Bodies

