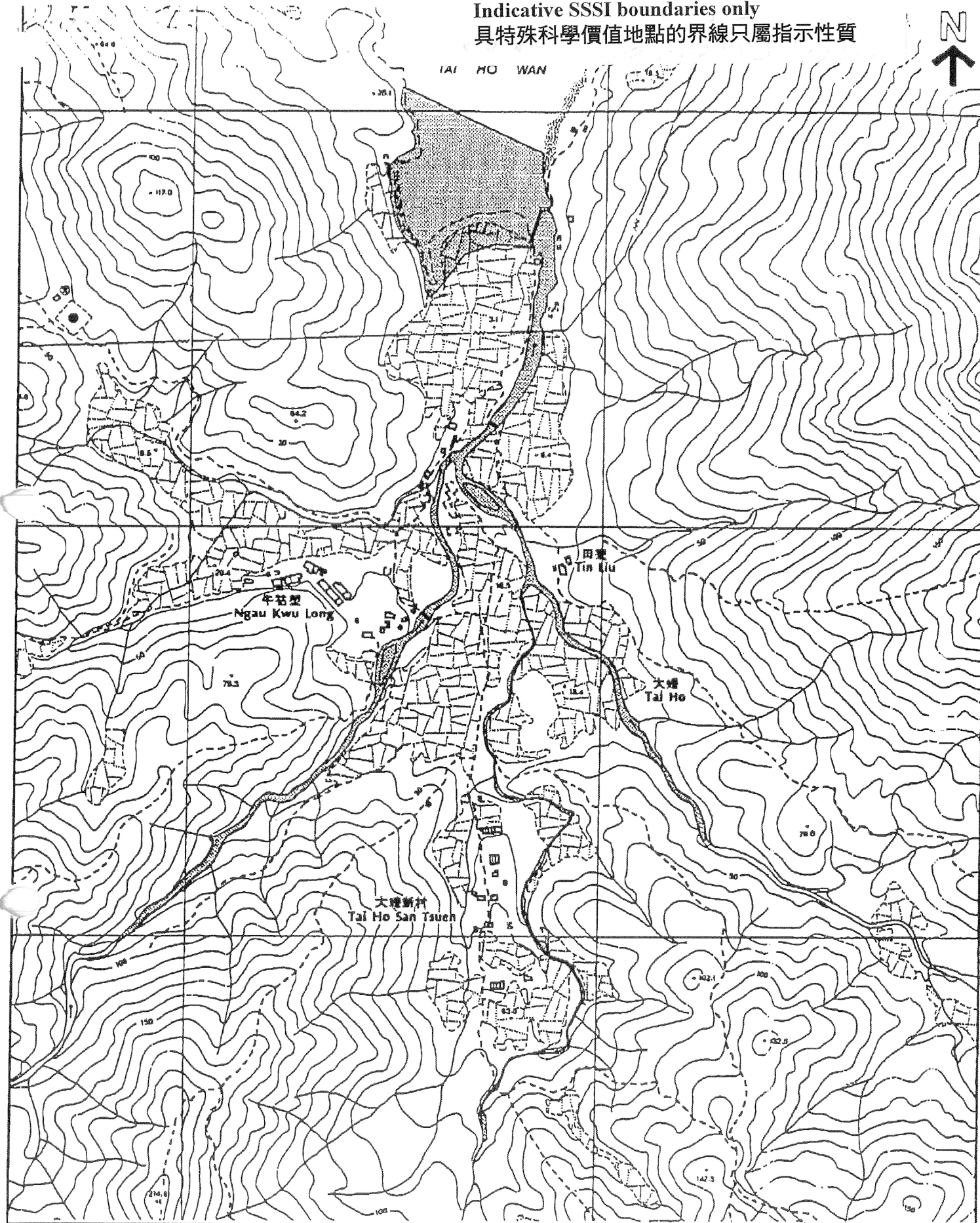


Indicative SSSI boundaries only  
 具特殊科學價值地點的界線只屬指示性質



TAI HO WAN



REFERENCE

DATE OF DESIGNATION: 5-5-99  
 BASE PLAN EXTRACTED FROM:  
 HP5C SHEET 10-SW-A

DATE: 2.7.99

SITE OF  
 SPECIAL SCIENTIFIC INTEREST -  
 TAI HO STREAM, LANTAU ISLAND

METRES 120 0 120 240 METRES  
 SCALE 1 : 5 000

PLANNING  
 DEPARTMENT



PLAN No.  
 TPB/M/92/6

SITE No.  
 63

No. 63 - Tai Ho Stream, Lantau Island

The site, having an area of about 5 hectares, covers a natural stream (Tai Ho Stream) with several tributaries running from upland to the lowland estuary. The Tai Ho Stream runs past Tin Liu, Tai Ho San Tusen and Ngau Kwu Long to Tai Ho Wan. The southern end of the Tai Ho Wan with adjoining mangrove and seagrass is also included. Details of the site coverage are marked on the attached plan.

Date of Designation

5 May 1999

Special Scientific Interest

The Tai Ho Stream is unique in the local context. It is one of the few remaining medium-sized natural streams stretching from uplands to the lowland estuary. The Tai Ho Stream was reported as the stream supporting the greatest diversity of fresh water and brackish-water fish in the territory.<sup>1</sup> A total of 47 species, including some newly recorded fishes for Hong Kong, was recorded in this stream.<sup>12</sup>

Of particular interest of the fish fauna is a migratory fish, called Ayu (Plecoglossus altivelis).<sup>3</sup> Tai Ho Stream was reported as the only known location for the species in the territory. Ayu, which is related to the salmon, is born in freshwater and migrates to the sea before returning to freshwater to breed. However, the fish is rarely sighted. The first sighting of this fish was made in 1985 and a female individual was captured again in 1993.

Close to the stream mouth, at the southern end of the Tai Ho Wan, there are some mangroves<sup>4</sup> and small patches of seagrass (Halophila beccarii)<sup>5</sup>. The mangroves are dominated by Aegiceras corniculatum and Kandelia candel with a good sized stand of locally uncommon species, Bruguiera gymnorhiza. Mangroves and seagrass beds, in general, provide shelter and food for a variety of inter-tidal or marine invertebrates and fish. They are also important nursery areas for fish.

Degree of Harzard

Activities that will change the water quality and hydrology of the stream, such as pollution, channelisation, culverting or diversion may affect the fish fauna and the marine invertebrates. Developments which alter considerably the existing land use surrounding the stream may affect the stream habitat and associated riparian vegetation. Construction works for further reclamation of the Tai Ho Wan may affect the mangrove and seagrass within the site.

### Recommended Protection Measures

The stream should be designated as a SSSI. The riparian corridor with its vegetation should be preserved as buffer for the stream as far as possible through appropriate land use zoning. Departments concerned with planning and development of the area should be made aware of the importance of the stream, so that due consideration on the conservation of the site will be given when developments in or near the site is proposed. Activities that will affect the water quality and flow of the stream should be avoided.

## References

1. Chong, D.H. and Dudgeon, D. 1992.  
Hong Kong Stream Fishes: An Annotated Checklist with Remarks on Conservation Status. Memoirs of the Hong Kong Natural History Society, No.19, 1992.
2. Dudgeon, D. and Corlett, R. 1994.  
Hills and Streams. Hong Kong University Press. Hong Kong.
3. Chong, D.H. 1993.  
Rediscovery of the Ayu from Tai Ho Stream, Lantau Island. Porcupine! Newsletter of the Hong Kong University Ecology Research Group (Number 5, March/April 1993).
4. Tam, N.F.Y. and Wong Y.S. 1997.  
Ecological Study on Mangrove Stands in Hong Kong. Agriculture and Fisheries Department, Hong Kong.
5. Wu, R. S. S. and Lee S. Y. 1998.  
Studies on the Biology, Reproduction, Ecology and Stress Physiology of Seagrass (*Zostera japonica*) in Hong Kong. Agriculture and Fisheries Department, Hong Kong.